



CADDIE BOOK

ØVERÅS DISKGOLFPARK

DGPT Elite Course



- Spectator Parking
- Player/Staff Parking ONLY
- Food
- Beer Vendor
- Vendors
- Check-in
- Tournament Central
- Restrooms
- Player Restrooms
- VIP Spectating
- General Admission Spectating

PAR **MPO** **62** 2,671 m

PAR **FPO** **65** 2,508 m



- Trees
- Paths
- Dirt
- Buildings
- Roads
- Dirt Roads
- FPO
- MPO



ØVERÅS DISKGOLF PARK
 DGPT ELITE LAYOUT

HOLE	1	2	3	4	5	6	7	8	9	OUT	
PAR	3	3	3	3	3	3	4	4	3	29	MPD
Dist. (m)	124	104	110	105	99	89	204	160	104	1,099	
PAR	3	3	3	3	3	3	4	4	3	29	FPD
Dist. (m)	124	104	110	105	84	89	204	146	81	1,047	

HOLE	10	11	12	13	14	15	16	17	18	IN	TOT	
PAR	3	3	4	4	3	4	4	4	4	33	62	MPD
Dist. (m)	111	111	212	222	124	258	185	155	194	1,572	2,671	
PAR	3	3	5	5	3	5	4	4	4	36	65	FPD
Dist. (m)	89	95	212	222	108	258	156	127	194	1,461	2,508	

GENERAL RULES & NOTES

- The 2-meter rule is not in effect.
- **OUT OF BOUNDS:** OB areas (including water and traditional golf greens) are primarily defined by a white painted line or white string/rope. Where present, white stakes serve as a visual aid for OB lines. Where fencing is used, the inside edge of the fence posts is the OB line. As is standard, the line itself is considered OB. (806.02)
- **OB WATER:** For any OB water that is not marked with a painted line or rope, a disc coming to rest surrounded by water is considered OB.
- If OB is not shown on the hole map for a particular hole, it is not in play for that hole.
- **HAZARDS:** Hazard areas are defined by a yellow painted line. The painted line is considered to be part of the hazard. By rule, discs coming to rest in a hazard area incur a penalty throw, but the lie is not relocated. (806.05)
- Ad walls that are parallel to an OB line DO NOT serve as the OB line. The OB line will be defined by a painted line running in front of and parallel to the walls. The minimum distance between the walls and OB line is 1 meter.
- **DROP ZONES:** Optional Drop Zones (DZ) may be provided on holes for tee shots that come to rest OB. Unless otherwise specified, players may re-throw from their previous lie (tee), from where the disc was last inbounds, OR from the Drop Zone. One penalty throw is assessed no matter which option is chosen.
- **OB RULE RESTRICTIONS:** Where noted, Drop Zone use may be required after an OB throw, or a player's standard options after going OB may be restricted. PDGA rules waivers have been obtained for these holes, and are marked accordingly.
- **MANDATORIES:** Mandatory Routes are played according to PDGA Rule 804.01. An arrow will be affixed to an object defining the left or right boundary of the restricted plane by pointing to the side of the object opposite the restricted plane. The restricted plane continues away from the marked object, as indicated by an orange painted line, and continues in the same direction of the line to infinity. The restricted plane extends vertically from the painted line to infinity bounded by vertical planes on each edge of the line. If part of a thrown disc clearly enters into a restricted space in play for the hole, the player receives one penalty throw. The lie for the next throw is the DROP ZONE for that MANDATORY, unless otherwise noted. In the case that a Drop Zone is located more than 10 m from the mandatory object, a PDGA rules waiver has been obtained.

- **RELIEF:** Players may obtain relief backward on the line of play, without penalty, from temporarily placed advertising assets, permanent sign posts, or fairway markers, per PDGA Rule 803.02 (A). As the rule states, “unless greater relief is announced by the Director” instead of only taking the closest lie that provides relief, the Tournament Director has granted up to 1m relief from the aforementioned assets/obstacles.
- **CASUAL OBSTACLES:** Per rule 803.01 (B) (1), “A casual obstacle is ... any item as designated by the Director,” spectator stakes and ropes that are in-bounds have been designated as casual obstacles, and may be moved and replaced if they impede a player’s stance.
- Players may obtain relief from unmarked casual water per PDGA Rule 806.03. Areas marked with orange paint are designated as casual areas.
- Per PDGA waiver, players are responsible for friends or family who are spectators and who attempt to join the playing group in violation of CM 3.05.G. Players will receive courtesy violation penalties under 812.C if this occurs.
- In the event of a tie for first place after three rounds of play, a winner will be determined by sudden death playoff on holes 18, 1, and 2 repeating until a winner is determined.

HOLE-SPECIFIC NOTES

HOLE 1

OB: Road right and beyond; Marked rough area left and beyond; Marked line short left and beyond.

MANDATORY: Discs must not enter restricted plane right of marked tree. If MANDO is missed, proceed to DZ +1 penalty throw.

HOLE 2

OB: Marked rough right and beyond; Road/Marked line left and beyond; Marked line long and beyond.

NOTE: Water short of the green plays as a relief area (806.04).

HOLE 3

OB: Marked line long and beyond.

HOLE 4

OB: Marked line left/right and beyond.

HOLE 5

OB: Marked line right/long and beyond; Marked pond area.

DROP ZONE: After any tee shot landing in the marked OB pond area, player must proceed to DZ +1 penalty throw. Standard OB rules apply on all subsequent throws.

HOLE 6

OB: Marked line long and beyond.

TRIPLE MANDATORY: Discs must not enter restricted planes to the outside or above the Gates of Valhalla. If TRIPLE MANDO is missed, proceed to either DZ +1 penalty throw.

HOLE 7

OB: Marked line surrounding the hole and beyond, including pond area short of the pin.

HOLE 8

OB: Marked line right/long and beyond; Road left and beyond.

HOLE 9

OB: Road left and beyond; Fence/Marked line long and beyond.

HOLE 11

HAZARD: All area outside of marked island.

HOLE 12

OB: Marked line left, crossing fairway and beyond, excluding the large marked safe landing zone across the open field.

DROP ZONE: After any throw landing OB, player may proceed to DZ +1 penalty throw. Standard OB rules apply.

HOLE 13

OB: Marked line surrounding the hole and beyond, including pond area in fairway.

HOLE 14

OB: Marked line surrounding the hole and beyond.

HOLE 15

OB: Marked line surrounding the fairway and beyond; Marked OB “river” crossing fairway short of the green.

HOLE 16

OB: Marked line surrounding the hole and beyond.

MANDATORY: Discs must not enter restricted plane left of marked tree. If MANDO is missed, proceed to DZ (FPO tee) +1 penalty throw. (FPO re-tees.)

HOLE 17

OB: Marked line left/long and beyond.

HOLE 18

OB: Marked line surrounding the hole and beyond.

NOTE: Players may take casual relief from the tractor.





ØVERÅS DISKGOLFPARK

DGPT Elite Course • Vestnes, Norway



HOLE MAPS LEGEND

- | | | | |
|--|------------------------|--|----------------------------|
| | OB Water | | Open Area |
| | OB Area | | Dirt Areas / Forest Floor |
| | Hazard Area | | Cement Areas |
| | Casual Area | | Paved Areas / Parking Lots |
| | Rough / Marsh | | General Water |
| | Dirt Paths / Roads | | Trees / Canopy |
| | Roads | | Bushes / Brush |
| | Sidewalks/Cart Paths | | Evergreens |
| | Tree Trunks (approx.) | | |
| | Distance Markers (ft.) | | |
| | | <p>Hole Shape Swath</p> <p><i>Measuring reference to indicate landing zone deviation from center line of play to achieve C1 or C2.</i></p> | |
| | Basket (MPO/FPO) | | |
| | | Mandatory Line | |
| | | Mandatory | |
| | Tee Box (MPO/FPO) | | Drop Zone |
| | | | Fences / Walls / Barriers |
| | | | Buildings / Obstructions |
| | Raised Baskets | | Light Posts/Poles |
| | Other Tee Boxes | | |
| | Other Baskets | | |

ØVERÅS

1



DGPT

ELITE

MPO

FPO

PAR

3

Bushnell OFFICIAL

124 METERS

407 ft.



RULES & NOTES

OB: Road right and beyond; Marked rough area left and beyond; Marked line short left and beyond.

MANDATORY: Discs must not enter restricted plane right of marked tree. If MANDO is missed, proceed to DZ +1 penalty throw.



ØVERÅS

2



DGPT

ELITE

MPO

FPO

PAR

3

 Bushnell OFFICIAL

104
METERS

341 ft.



RULES & NOTES

OB: Marked rough right and beyond; Road/marked line left and beyond; Marked line long and beyond.

NOTE: Water short of the green plays as a relief area (806.04).



ØVERÅS

3



DGPT

ELITE

MPO

FPO

PAR

3

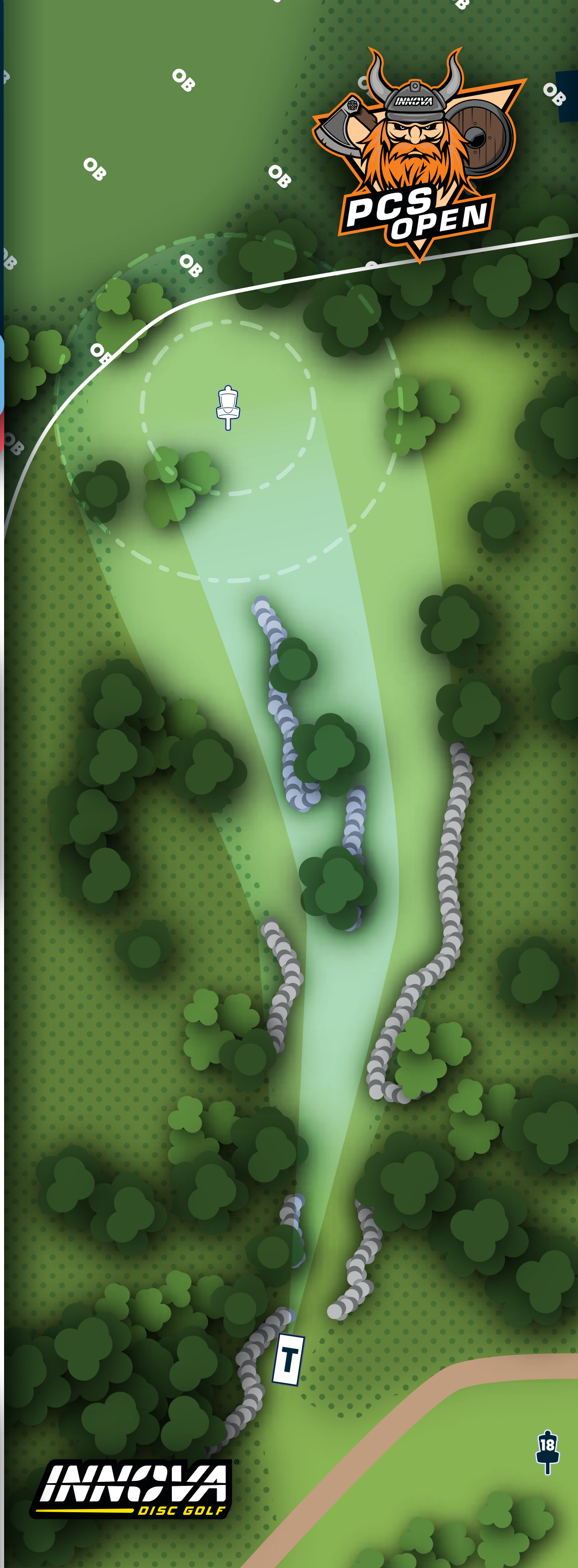
Bushnell OFFICIAL

110 METERS
361 ft.



RULES & NOTES

OB: Marked line long and beyond.



ØVERÅS

4



DGPT

ELITE

MPO

FPO

PAR

3

Bushnell OFFICIAL

105
METERS
345 ft.



RULES & NOTES

OB: Marked line left/right and beyond.



ØVERÅS

5



DGPT

ELITE

FPO

PAR

3

Bushnell OFFICIAL

84 METERS
276 ft.

RULES & NOTES

OB: Marked line right/long and beyond; Marked pond area.

DROP ZONE: After any tee shot landing in the marked OB pond area, player must proceed to DZ +1 penalty throw. Standard OB rules apply on all subsequent throws.



ØVERÅS

5



DGPT

ELITE

MPO

PAR

3

B Bushnell OFFICIAL

99

METERS

325 ft.


RULES & NOTES

OB: Marked line right/long and beyond; Marked pond area.

DROP ZONE: After any tee shot landing in the marked OB pond area, player must proceed to DZ +1 penalty throw. Standard OB rules apply on all subsequent throws.



ØVERÅS

6



DGPT

ELITE

MPO

FPO

PAR

3

B Bushnell OFFICIAL

89

METERS

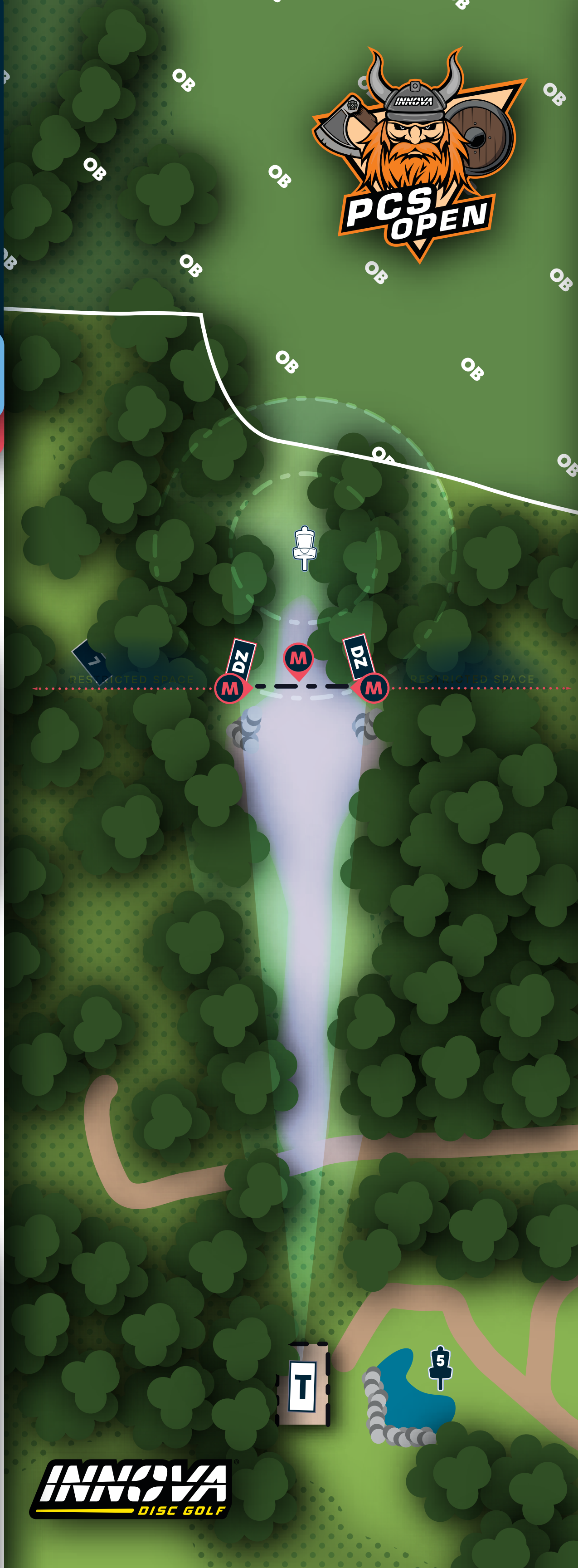
292 ft.



RULES & NOTES

OB: Marked line long and beyond.

TRIPLE MANDATORY: Discs must not enter restricted planes to the outside or above the Gates of Valhalla. If TRIPLE MANDO is missed, proceed to either DZ +1 penalty throw.



ØVERÅS

7



DGPT

ELITE

MPO

FPO

PAR

4

Bushnell OFFICIAL

204 METERS

669 ft.

RULES & NOTES

OB: Marked line surrounding the hole and beyond, including pond area short of the pin.



ØVERÅS

8



DGPT

ELITE

FPO

PAR

4

ⓑ Bushnell OFFICIAL

146
METERS

479 ft.



RULES & NOTES

OB: Marked line right/long and beyond; Road left and beyond.



ØVERÅS

8



DGPT

ELITE

MPO

PAR

4

Bushnell OFFICIAL

160
METERS
525 ft.



RULES & NOTES

OB: Marked line right/long and beyond; Road left and beyond.



ØVERÅS

9



DGPT

ELITE

FPO

PAR

3

Bushnell OFFICIAL

81

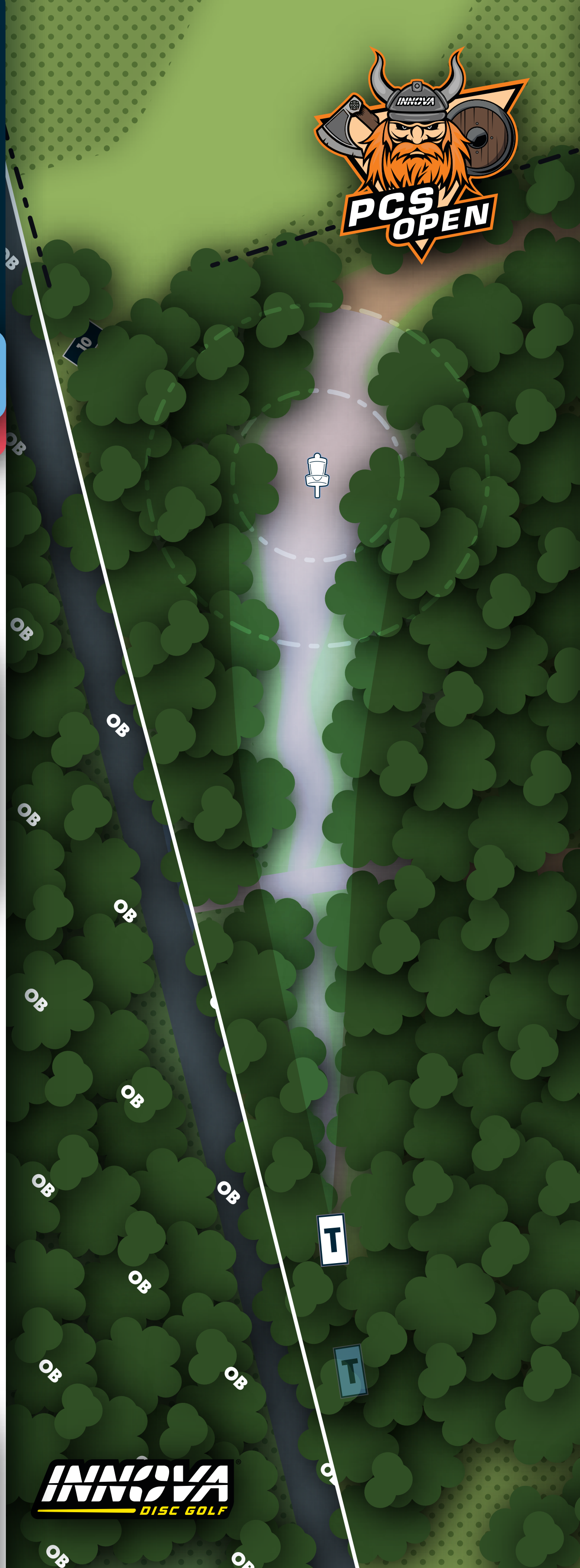
METERS

266 ft.



RULES & NOTES

OB: Road left and beyond.



ØVERÅS

9



DGPT

ELITE

MPO

PAR

3

B Bushnell OFFICIAL

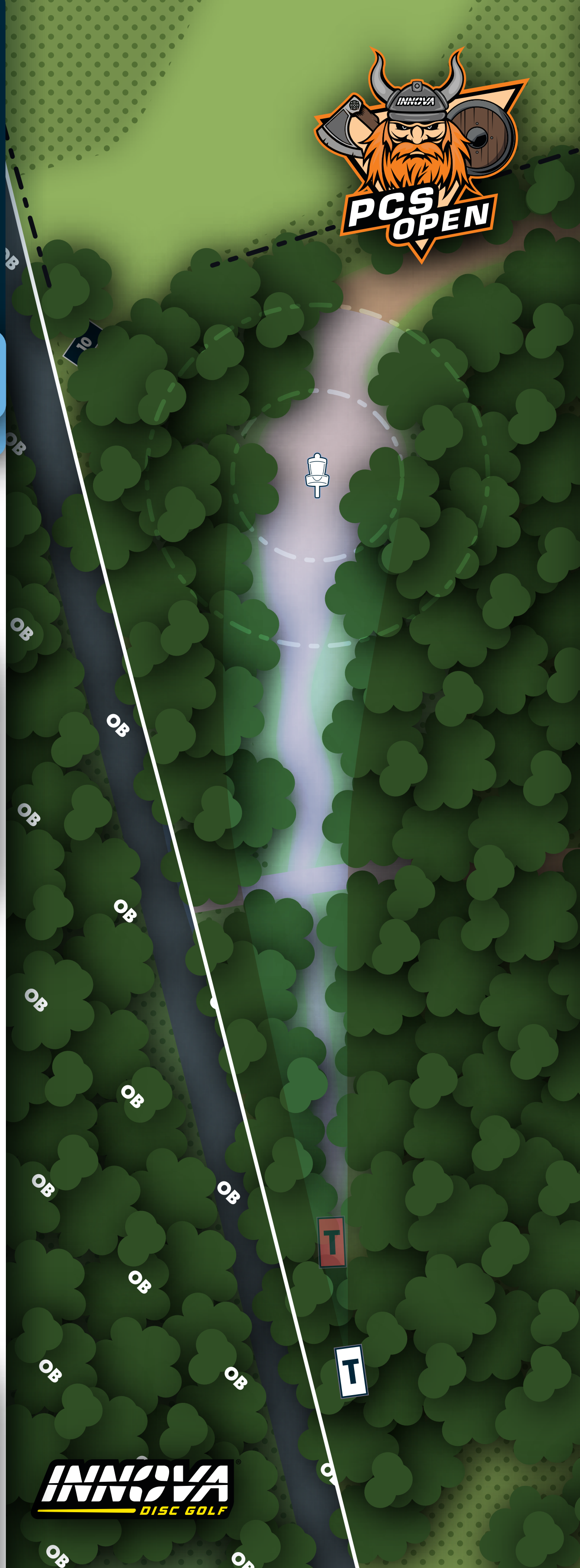
104
METERS

341 ft.



RULES & NOTES

OB: Road left and beyond;
Fence/marked line long and
beyond.



ØVERÅS

10



DGPT

ELITE

MPO

FPO

PAR

3

Bushnell OFFICIAL

111

89

METERS

364 ft.

292 ft.



T

ØVERÅS

11



DGPT

ELITE

MPO

FPO

PAR

3

Bushnell OFFICIAL

111

95

METERS

364 ft.

312 ft.



RULES & NOTES

HAZARD: All area outside of marked island.



ØVERÅS

12



DGPT

ELITE

MPO

FPO

PAR

4

5

Bushnell OFFICIAL

212 METERS

696 ft.



RULES & NOTES

OB: Marked line left, crossing fairway and beyond, excluding the large marked safe landing zone across the open field.

DROP ZONE: After any throw landing OB, player may proceed to DZ +1 penalty throw. Standard OB rules apply.



ØVERÅS

13



DGPT

ELITE

MPO

FPO

PAR

4

5

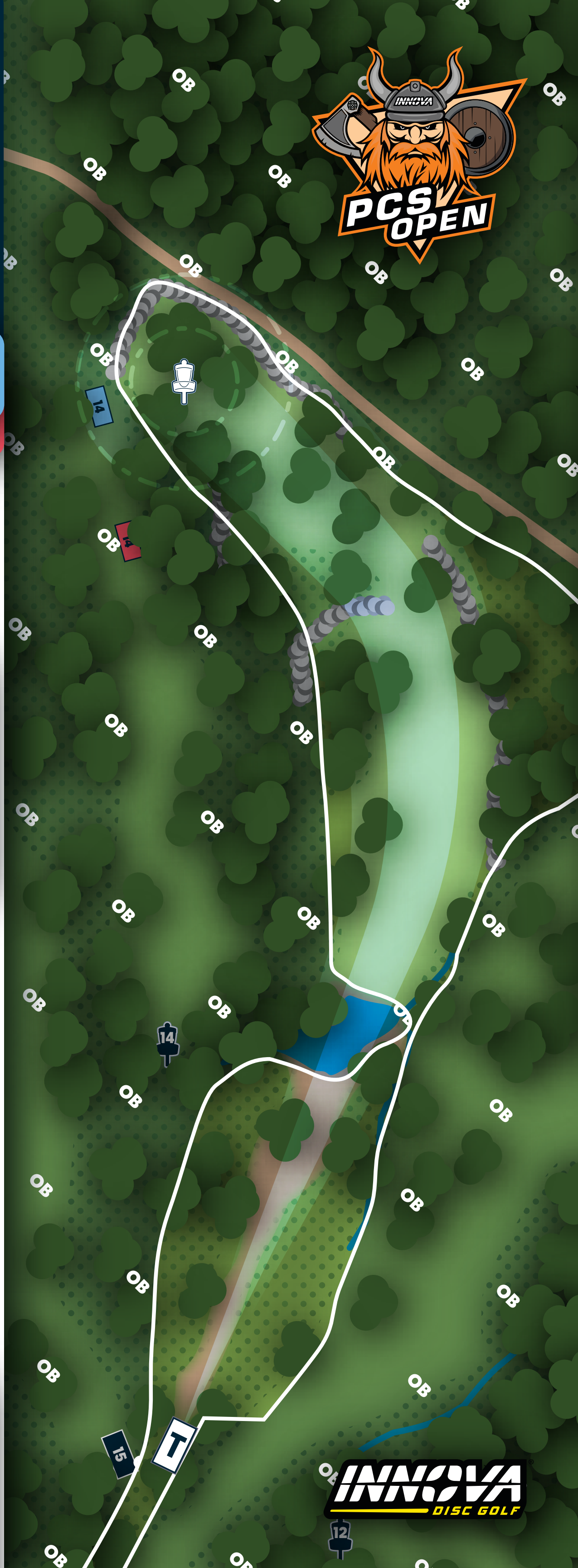
Bushnell OFFICIAL

222 METERS
728 ft.



RULES & NOTES

OB: Marked line surrounding the hole and beyond, including pond area in fairway.



ØVERÅS

14



DGPT ELITE

FPO

PAR

3

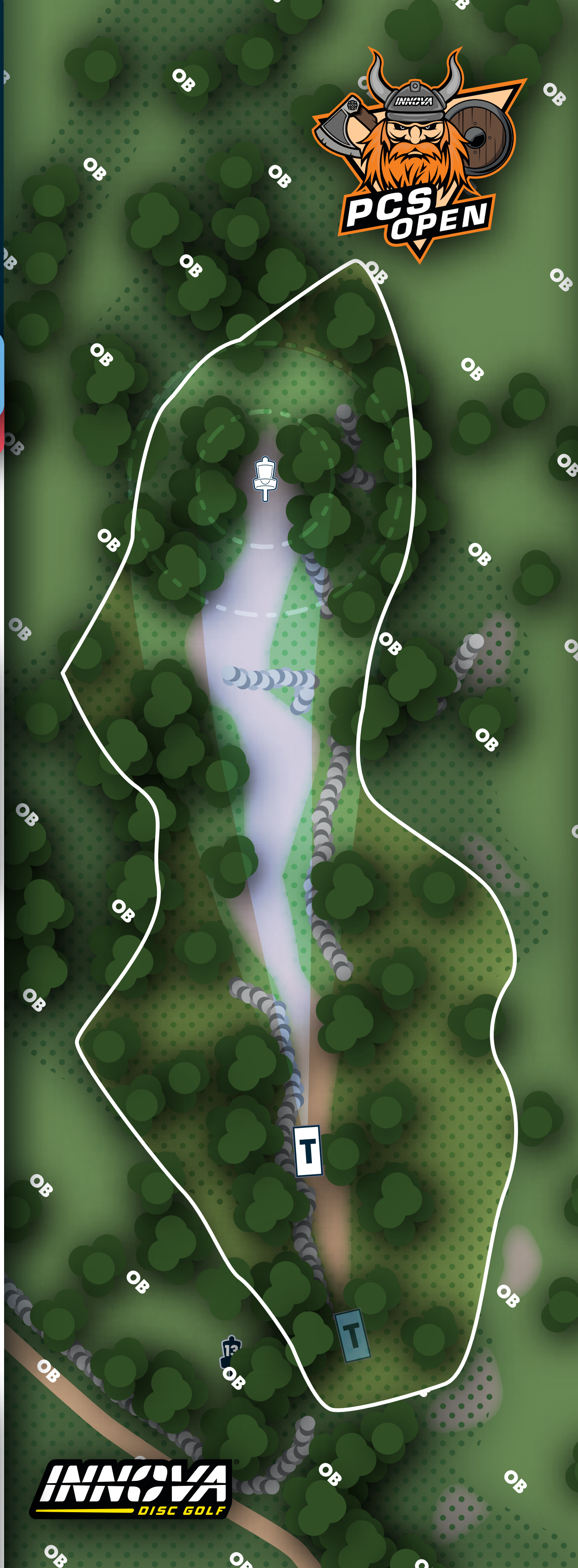
Bushnell OFFICIAL

108
METERS
354 ft.



RULES & NOTES

OB: Marked line surrounding the hole and beyond.



ØVERÅS

14



DGPT

ELITE

MPO

PAR

3

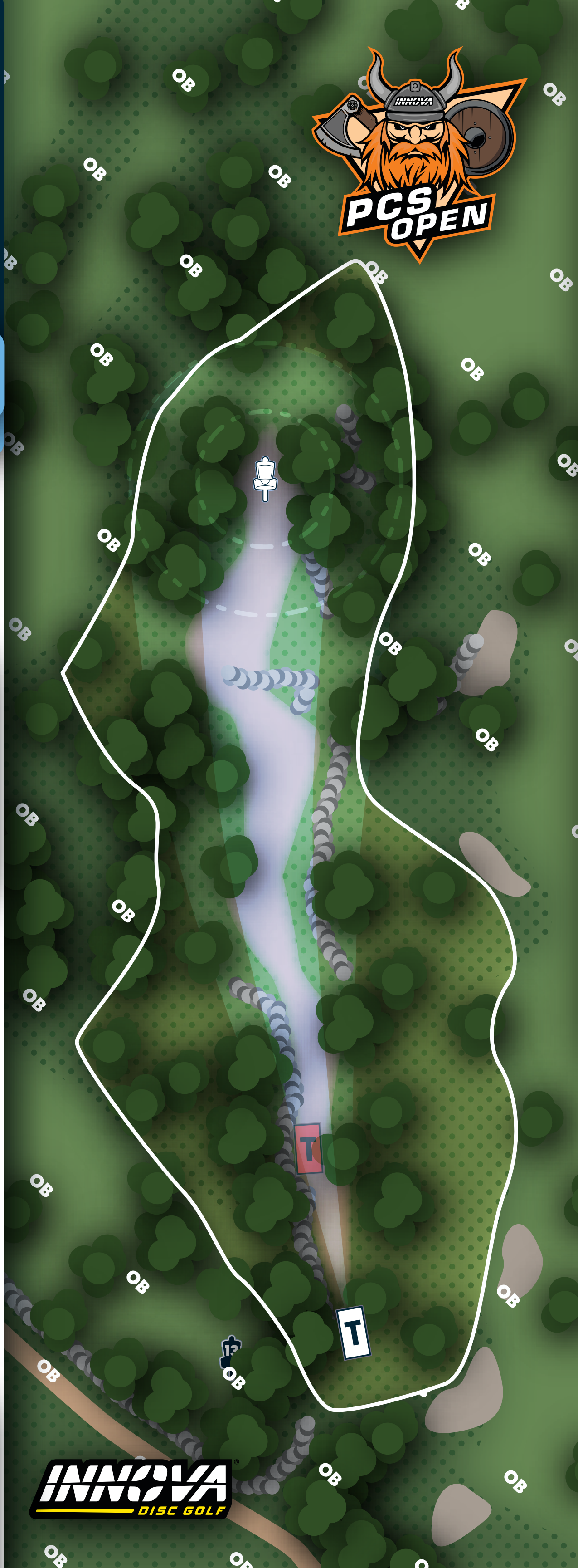
Bushnell OFFICIAL

124
METERS
407 ft.



RULES & NOTES

OB: Marked line surrounding the hole and beyond.



ØVERÅS

15



DGPT

ELITE

MPO

FPO

PAR

4

5

B Bushnell OFFICIAL

258

METERS

846 ft.



RULES & NOTES

OB: Marked line surrounding the fairway and beyond; Marked OB "river" crossing fairway short of the green.



ØVERÅS

16



DGPT

ELITE

FPO

PAR

4

B Bushnell OFFICIAL

156

METERS

512 ft.



RULES & NOTES

OB: Marked line surrounding the hole and beyond.

MANDATORY: Discs must not enter restricted plane left of marked tree. If MANDO is missed, re-tee +1 penalty throw.



ØVERÅS

16



DGPT

ELITE

MPO

PAR

4

Bushnell OFFICIAL

185
METERS

607 ft.

RULES & NOTES

OB: Marked line surrounding the hole and beyond.

MANDATORY: Discs must not enter restricted plane left of marked tree. If MANDO is missed, proceed to DZ (FPO tee) +1 penalty throw.



ØVERÅS

17

INNOVA
DISC GOLF



DGPT

ELITE

MPO

FPO

18

PAR

4

Bushnell OFFICIAL

155
127

METERS

509 ft.

417 ft.

OB LINE CONTINUES AND IS SHARED WITH HOLE 5

RULES & NOTES

OB: Marked line left/long and beyond.

ØVERÅS

18



DGPT

ELITE

MPO

FPO

PAR

4

Bushnell OFFICIAL

194
METERS

637 ft.

RULES & NOTES

OB: Marked line surrounding the hole and beyond.

NOTE: Players may take casual relief from the tractor.

